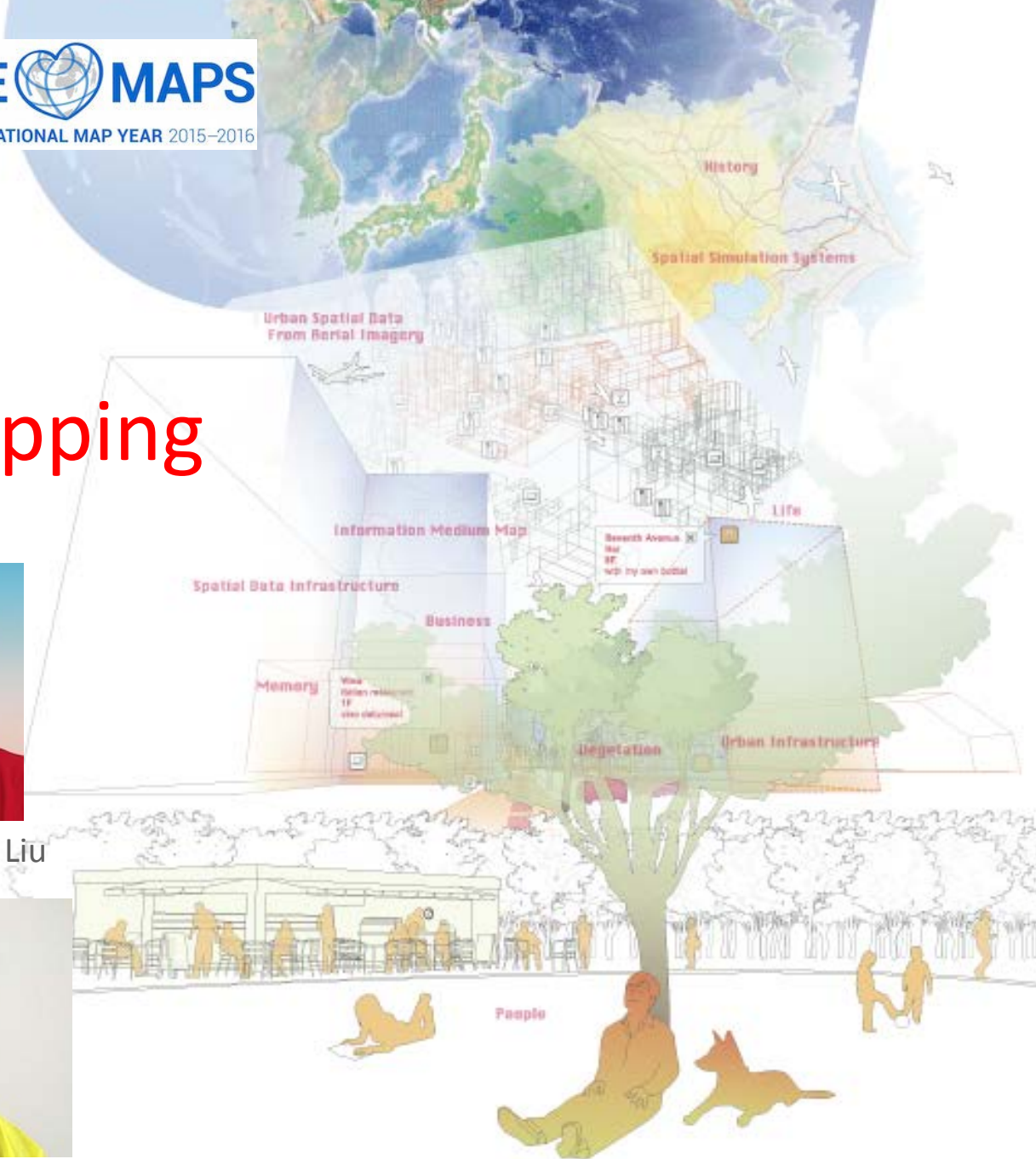




# Speed Presentation: Commission on Ubiquitous Mapping



Chair: M. Arikawa



Vice-Chair: Y. Liu



Advisor: T. Morita



Secretary: Min Lu

<http://ubimap.csis.u-tokyo.ac.jp/>

# Map Evolution

(1) Mapping among Brain, Media, Databases and Earth over Environments

(2) Diversity of Maps

(3) Thursday - Room 4 - 12:30 - 13:30 -> Business Meeting

