



Achieve gender equality and empower all women and girls

5 GENDER EQUALITY

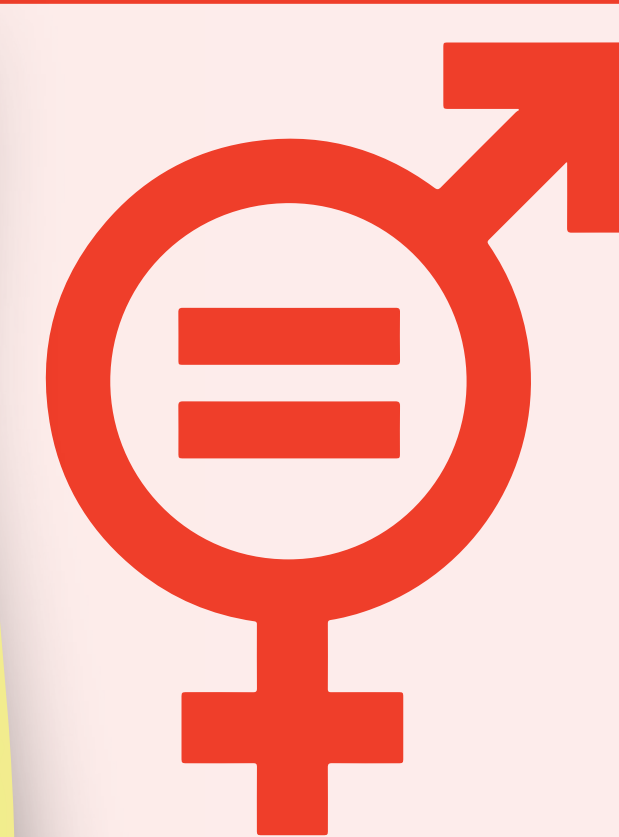
Target

Adopt and strengthen sound policies and enforceable legislation for the promotion of gender equality and the empowerment of all women and girls at all levels.

Indicator

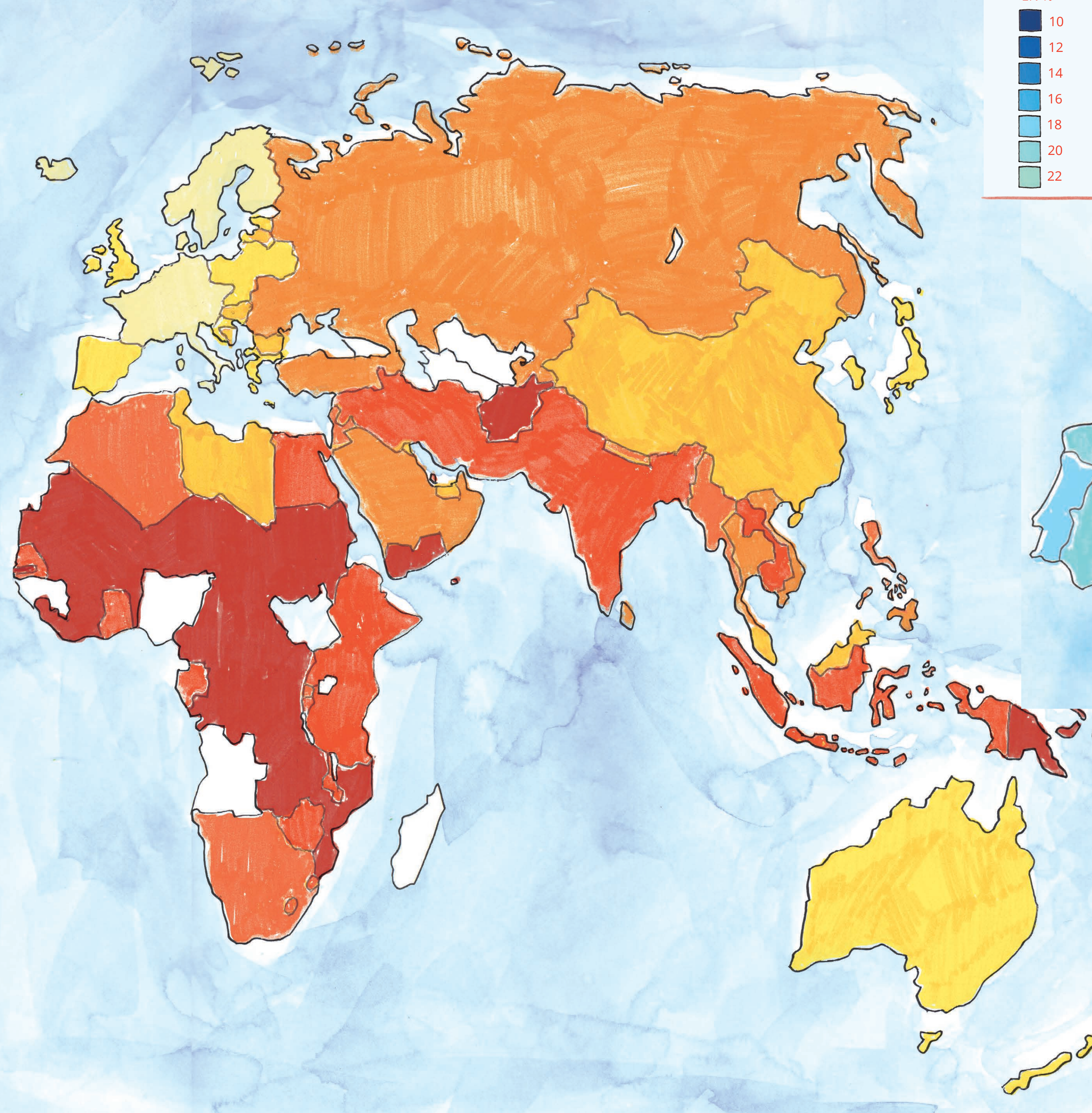
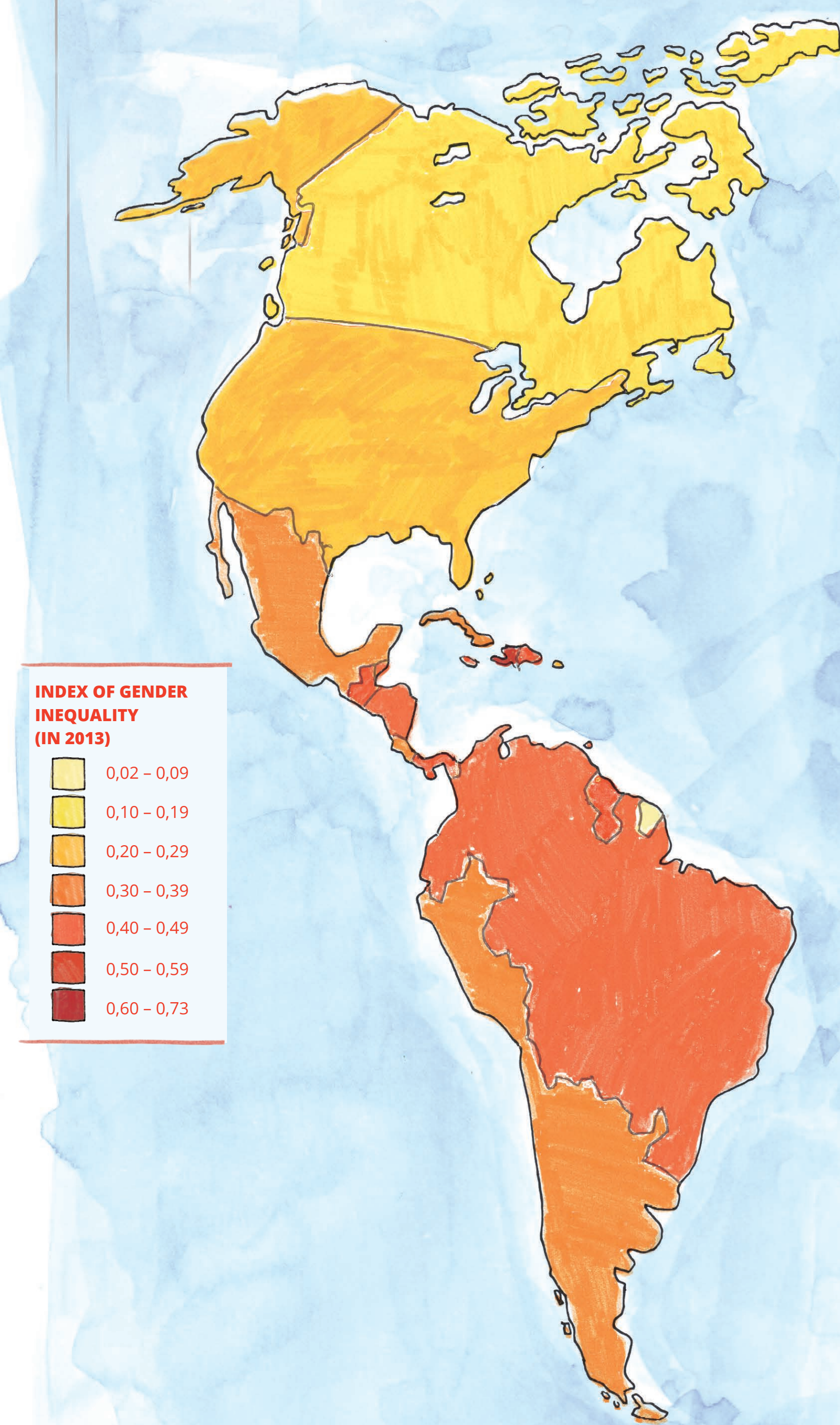
Monitor the existence and quality of policies to achieve gender equality

Art brings women to mapmaking & encourages the female way of cartographic expression & practices



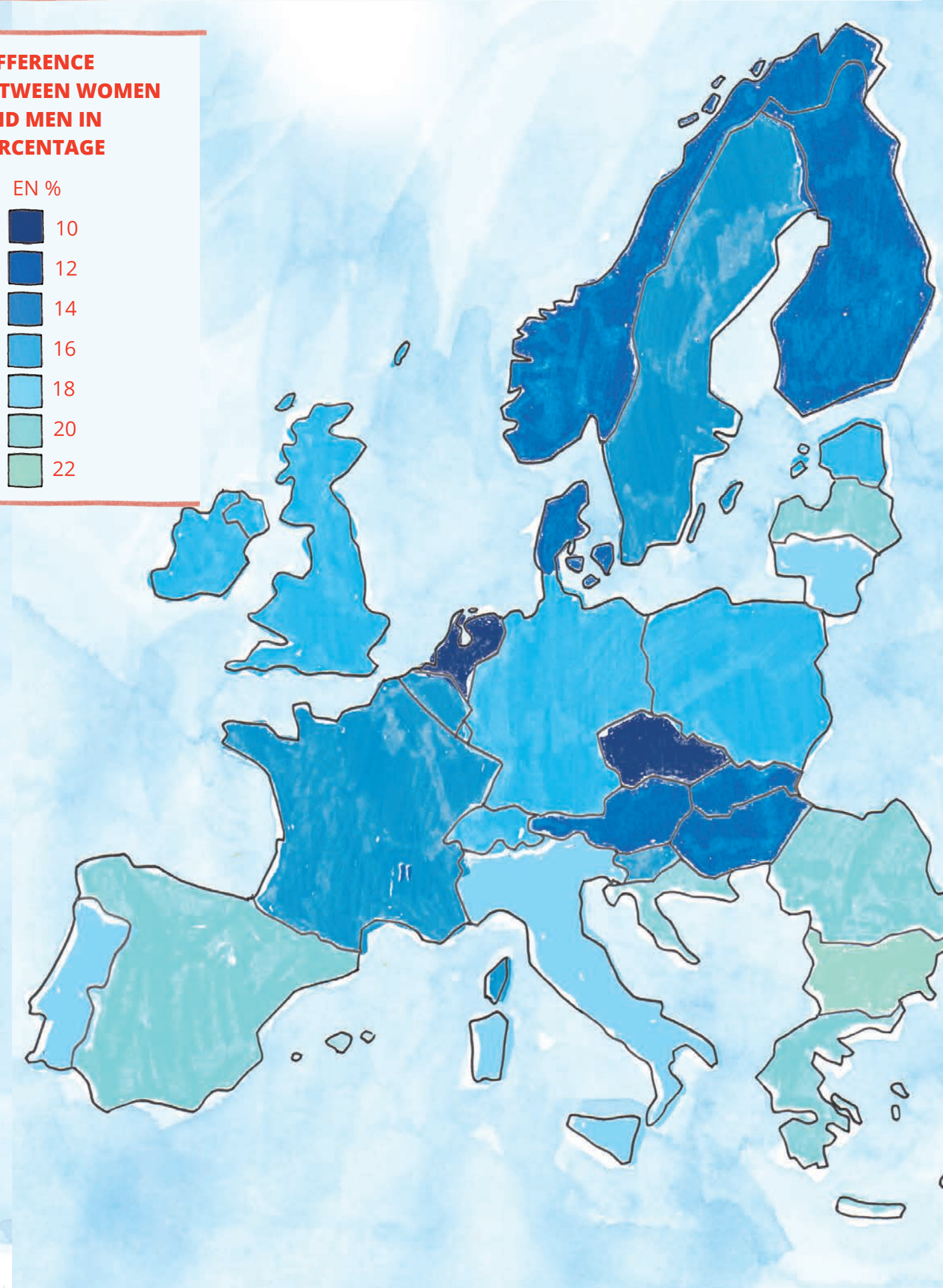
MAPPING GENDER ISSUES

MEASURING INEQUALITIES: THE INDEX OF GENDER INEQUALITY



POVERTY RATE OF WOMEN IN EUROPE

DIFFERENCE BETWEEN WOMEN AND MEN IN PERCENTAGE



Source of information: Attané, I., Bruguellès, C., Rault, W., (cartographie: C. Marin), 2015. Atlas mondial des femmes, Les paradoxes de l'émancipation, Autrement, ed. Institut National d'Études Démographiques (ined), Paris.

WOMEN ARTISTS AS MAPMAKERS

MADELEINE DE SCUDÉRY



CARTE DU PAYS DE TENDRE, (1654)

La Carte du pays de Tendre is a map of an imaginary country called Tendre, imagined by Madeleine de Scudéry in her novel Clélie, histoire romaine, published in 10 volumes from 1654 to 1660. This work is an example of allegorical maps of love, this map opened new ways of using maps as a storytelling mechanism, since it graphically represents the different stage of relationships through a set of places names. It is a woman perspective on space (and cartography) that challenges the more conventional (military) type of approach of cartography.

http://fr.wikisource.org/wiki/Carte_de_Tendre

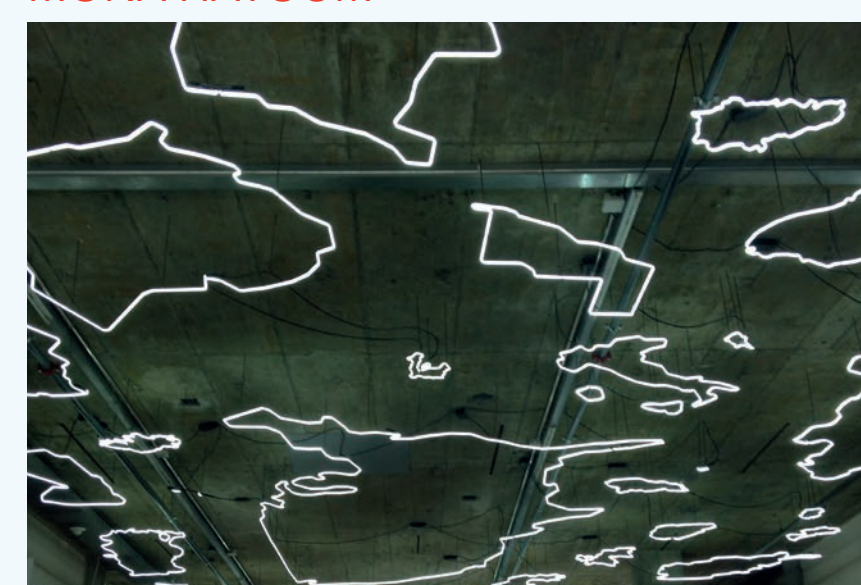
JANE HAMMOND



ALL SOULS (MASINDI), 2006 (DETAIL)

"In the midst of the Iraq war, Hammond dreamed of a map of the Middle East covered with butterflies and built a series around it. For her, painting is an entry point for accessing, and mapping, the unconscious. In the All Souls series, delicate butterflies float on softly rendered maps of South America, Africa, Asia, and the Middle East as tender evocations of the world's ephemeral nature" (Harmon, K., 2009. The Map as Art: Contemporary Artists Explore Cartography, 26,5 cm x 23,5 cm. ed. Princeton Architectural Press, p. 73)

MONA HATOU



SILVER LINING, 2011

Silver Lining is a suspended map of the world that was inaugurated in January 2011 at the Hochschule der Künste in Bern. "The numerous outlines, suspended from the ceiling and corresponding to the 192 member states of the United Nations, present an astonishing, unexpected picture of our geopolitical world. Unraveled and all mixed up, the nations have become drawings of light afloat under the ceiling. Like pieces of a jigsaw puzzle or ice floes during breakup, they have been separated. In SILVER LINING they no longer share borders; they have become configurations of light whose contours enable us to identify the individual nations. Only the scale of the countries has been retained" (Burckhardt, Jacqueline "Mona Hatoum's Silver Lining," Parkett (no. 89 2011), p. 250).

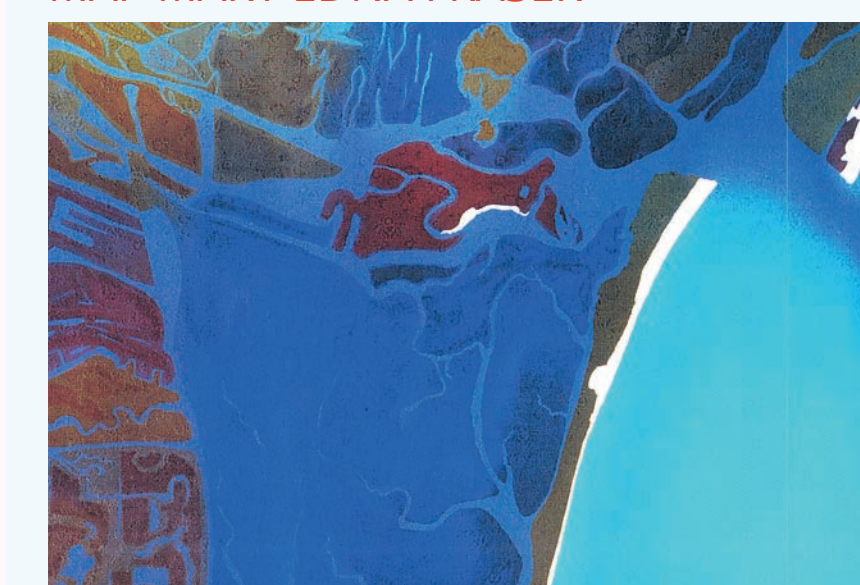
ARIANE LITTMAN



JERUSALEM, MARCH 2006

"Performed at the Science Museum in Jerusalem this work relates to the erasure of territory and memory. A map of Jerusalem where the name of Esh Sheikh Badr appears was screened on the floor. The map was compiled, drawn and printed by the Survey of Palestine in 1947, later in 1955 instead the name Ramat Hakiryia appears on the revised map by the Survey of Israel in 1955. Today, in the vicinity of that area are located all the major national institutions (...). Paradoxically, this act of erasing repeated during 7 hours became an existential act of exhuming forgotten names, forgotten memories, forgotten pains and reenacting basic forgotten feminine gestures." (<http://ariane-littman.com/2006/02/erasure-mehika/?set-sliderscat=jerusalem>)

MAP MARY EDNA FRASER



VENICE (ITALY), 2000

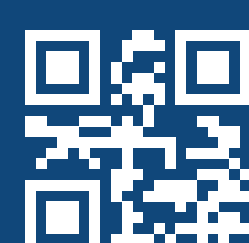
"Batik artist Fraser took part in an unusual artistic/ scientific collaboration to draw attention to the complexity and fragility of barrier islands around the world (...). "The batiks convey perspectives that the human eye, conventional maps, and cameras cannot reveal", she writes. "I hope the art will contribute to an appreciation of the dynamic nature of these moving strips of sand, and will act as a catalyst for the preservation of barriers islands for future generations" (Harmon, K., 2009. The Map as Art: Contemporary Artists Explore Cartography, 26,5 cm x 23,5 cm. ed. Princeton Architectural Press, p. 93)

The main goal of the ICA **Commission on Art & Cartography** is exploring the interaction at large between art and cartography which involves rethinking the way we approach spatial expressions.

commission &
on **CARTOGRAPHY**

Boundaries on maps may seem definitive, but there are often different perspectives on their status and position. This poster series is compiled from many sources by cartographers from different countries. The ICA tries to be neutral in such matters and boundaries shown reflect those found on the ground, in existing maps, or recognized by the United Nations. The ICA acknowledges that there may be different opinions and interpretations.

ICACI



Commission on Art & Cartography

Chair: Sébastien Caquard e-mail: sebastien.caquard@concordia.ca
Vice-chair: Julia Mia Stirnemann e-mail: juliamia.stirnemann@hkb.bfh.ch

WE  MAPS
INTERNATIONAL MAP YEAR 2015–2016

International Cartographic Association
Association Cartographique Internationale

