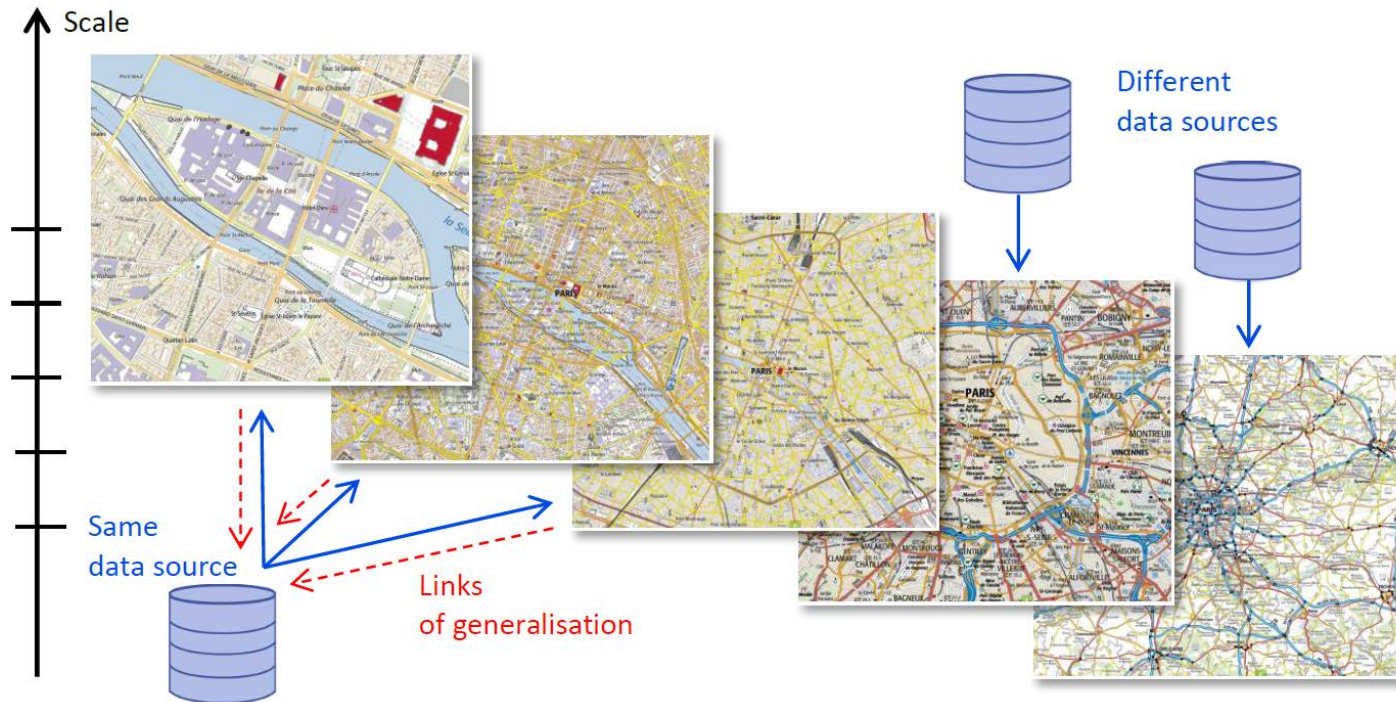


Why should you be interested in working with our ICA Commission ?



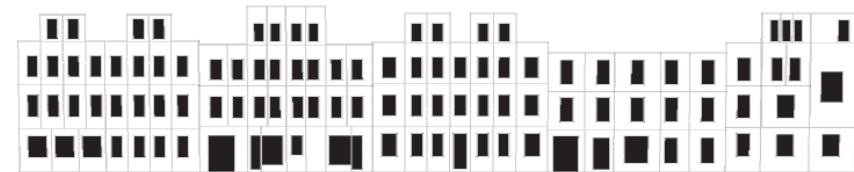
Different strategies of pyramid building (source: IGN-France)

Research & development

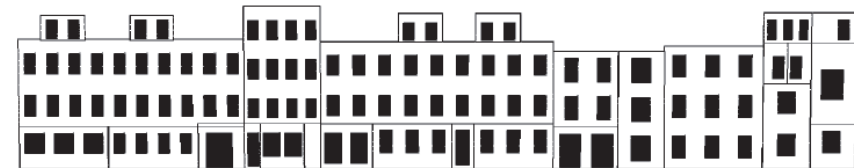
- Map Specifications and User Requirements
- Modelling Geographic Relationships in Automated Environments
- Generalisation Ontologies
- Development of Generalisation Algorithms
- Generalisation Process Modelling
- 3D-Generalisation



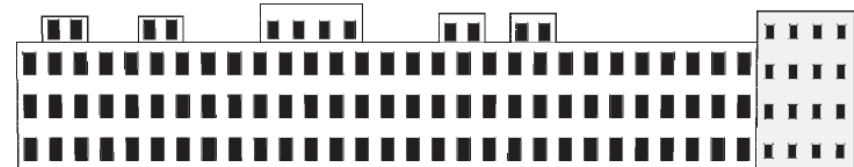
Figure 6: A facade structure covering a part of a block.



(a) Original

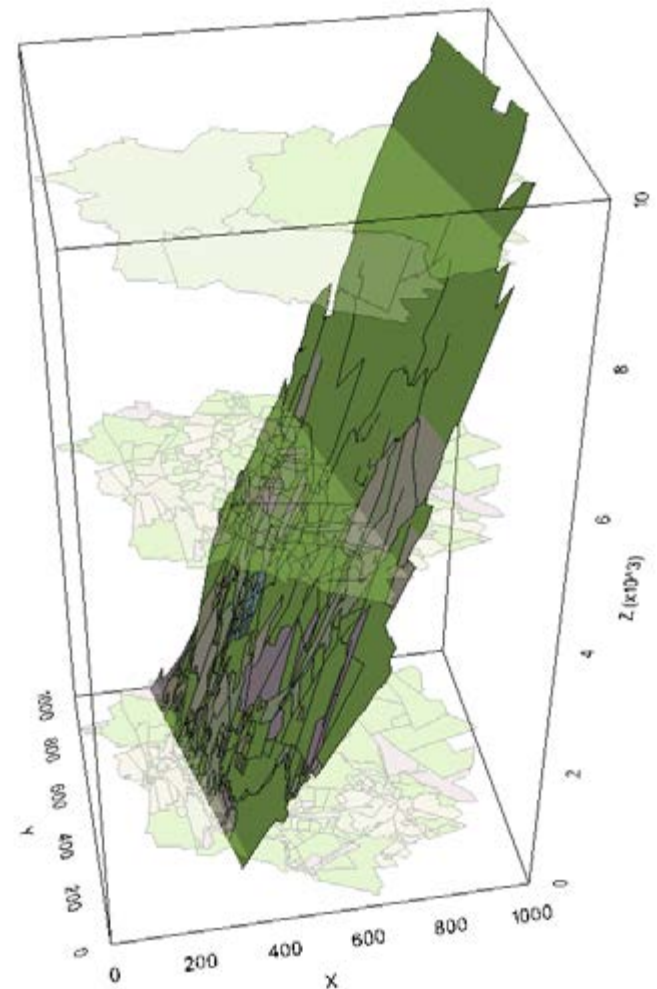


(b) Target resolution $\rho = 0.3m$



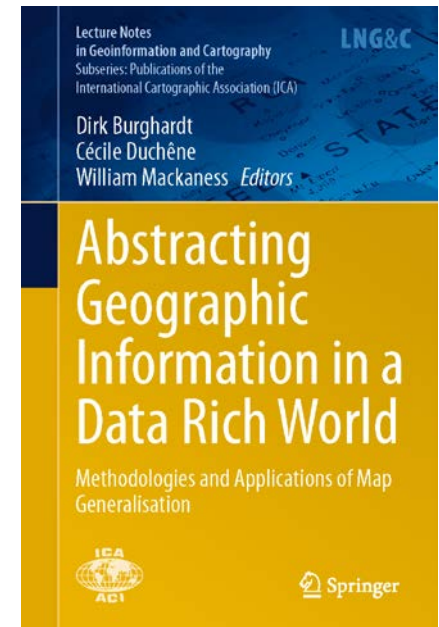
Research & development

- Map Specifications and User Requirements
- Modelling Geographic Relationships in Automated Environments
- Generalisation Ontologies
- Development of Generalisation Algorithms
- Generalisation Process Modelling
- 3D-Generalisation
- Integration of User Generated Spatial Content
- Terrain Generalisation
- Continuous Generalisation
- Evaluation and Quality in Generalisation
- Generalisation in Practice



Publications and workshops

- the commission has published a new structured generalisation book through Springer in 2014



Publications and workshops

- the commission has published a new structured generalisation book through Springer in 2014
- tradition of ICA Generalisation Workshops
 - 16th ICA Generalisation Workshop - jointly organised with the ICA Commission on Map production and Geo-Business in Dresden (2013)
 - 17th ICA Workshop -with focus on Integration, Filtering and Abstraction of User Generated or Multi-Source Spatial Content, Vienna (2014)
 - 18th ICA Generalisation Workshop – jointly organised with ISPRS WG II/2 in Rio de Janeiro
- Common work on building an Ontology of Generalisation for On-demand Mapping, Paris (2015)



Common initiatives and projects

ICA Commission on Generalisation and Multiple Representation

YOU ARE HERE: [HOME](#) ► [GENERALISATION ONTOLOGIES](#)



MAIN MENU

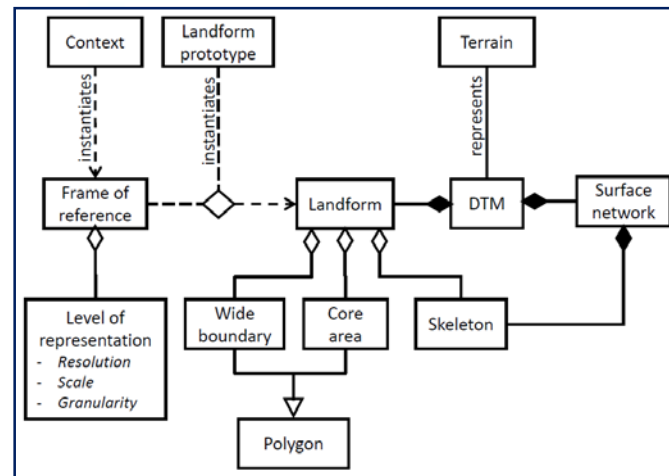
- Welcome
- Next events
- Previous events
- Members
- Books
- Current achievements
- Web services
- Generalisation Ontologies**
- Links

Generalisation Ontologies

The ontology called "GeneProcessOnto" is an attempt to collaboratively build an ontology for the definition of a shared vocabulary regarding generalisation processes, operations and algorithms. It is not exhaustive at all, and some modelling choices are still to be debated. The ontology is available on the web Protégé server (<http://webprotege.stanford.edu>) but you have to be registered to access. When signed up, please send your login to [Guillaume Touya](mailto:Guillaume.Touya) (firstname.lastname[at]ign.fr) requiring an access to view the ontology, and you will be able to view it in the list of the available ontologies, and then browse it or download it. If you wish to be part of the collaborative edition of the ontology, you can be added as an editor.

Platforms

- Web: <http://webprotege.stanford.edu> ("Sign In" and search for "GeneProcessOnto")
- Login request: [Guillaume Touya](mailto:Guillaume.Touya)
- [Workshop summary](#)





Join us on the ICA Commission Meeting on
Wednesday - 26th August Room 3 - 12:30 - 13:30