



# Working Group on Cartography on Early Warning and Crisis Management



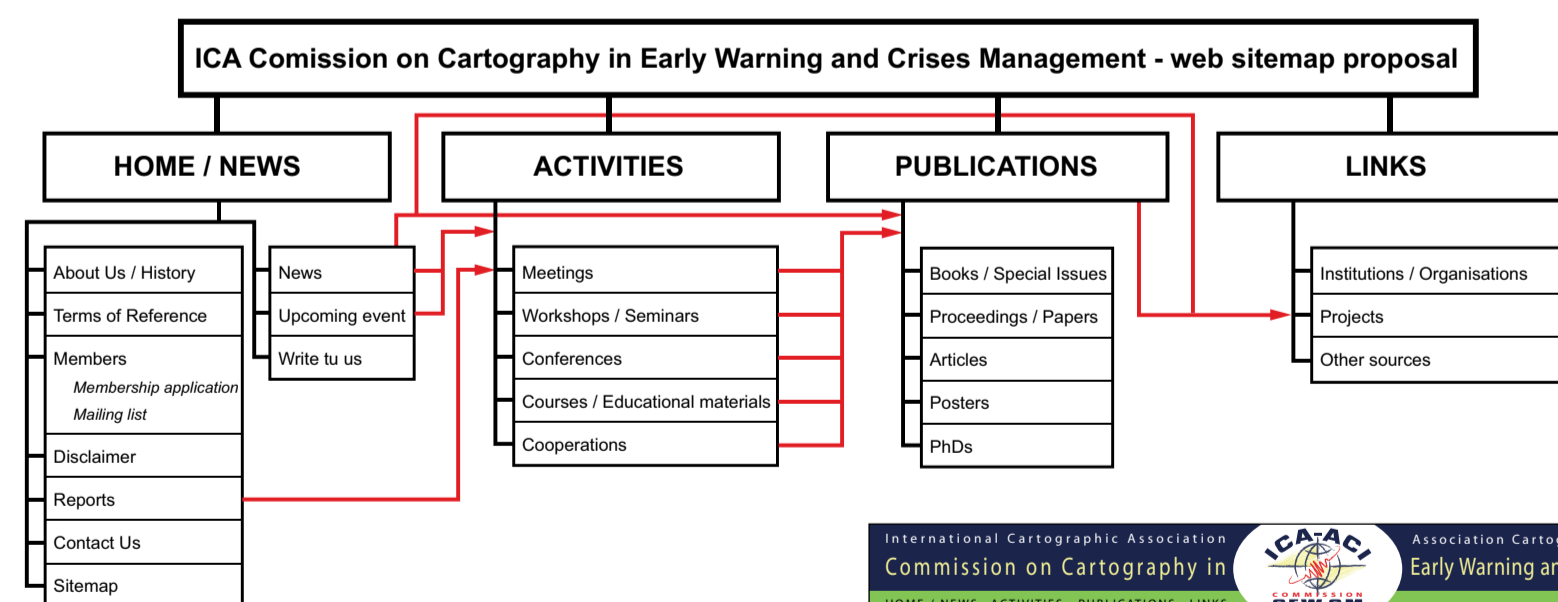
## Introduction to the Working Group

For a number of years the ICA has developed a focus on Early Warning and Crisis/Disaster/Risk management. Contemporary Chair of the Working Group, Prof. Milan Konečný, first elaborated on the need for cartography and GIScience to be actively involved in this area at the Second International Conference on Early Warning (EWC II) in 2003. ICA was between the first members of JBGIS who started to deal with the problem. The topic of Early Warning and Crisis Management was also incorporated into the 2005 Memorandum of Understanding between the United Nations Office for Outer Space Affairs and the ICA. At the 13th ICA General Assembly, held in conjunction with the ICC in La Coruna, was agreed to should establish a Working Group on Early Warning and Crisis Management which continues activities also after ICC in Moscow.

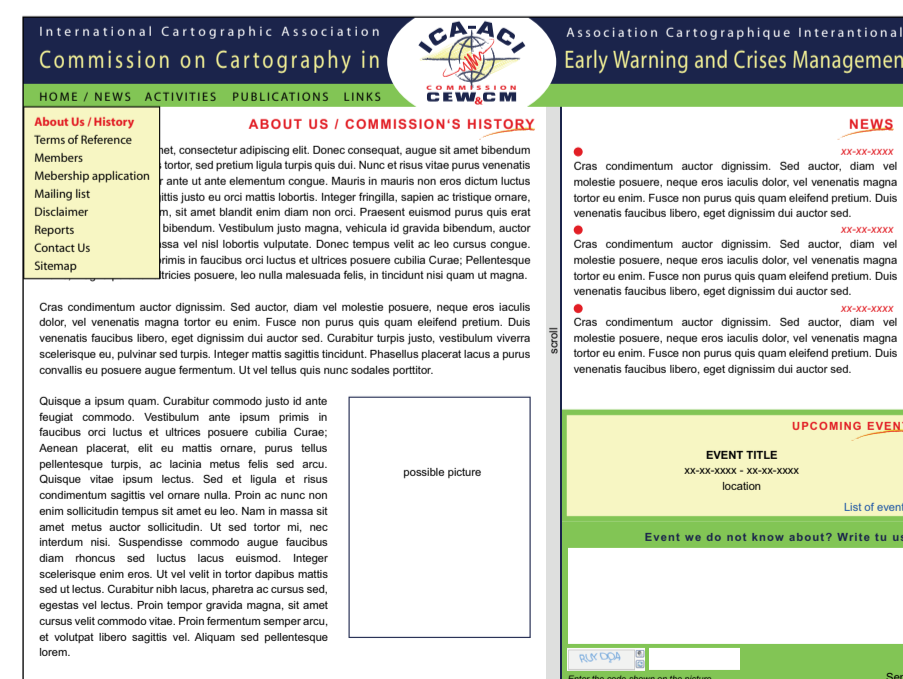
Working Group aims to:

- Provide leadership in the development of concepts, ontologisation and standardization for early warning, hazard, risk and vulnerability mapping.
- Promote the cartographic use of remotely sensed and other geospatial data for early warning and crisis management through scientific conferences, seminars and workshops.
- Investigate psychological condition of end user given by their personal character and situation and psychological condition of rescued persons (with support of ubiquitous and adaptive mapping).
- Foster quality mapping and cartographic modeling, including state-of-the-art visualization technologies, geospatial processing and publishing tools, for early warning and crisis management through topic related publication activities.
- Participate and contribute to global initiatives in early warning and crisis management through the maintenance of a website, newsletters and social network channels.
- Promote the development of dynamic and real-time cartographic visualization concepts and techniques for enhanced operational early warning activities through active collaboration with governmental authorities.
- Establish and cultivate professional networks for exchange of information among stakeholders in the domains of crisis management and early warning.
- Develop mechanisms of command and control systems intergration as well as improve real-time data-centric intelligence based on field sensors for purposes of Crisis Management.
- Develop mapping methodologies and technologies for EW&CM in children perspectives. Promote the process of teaching, understanding and using maps for EW&CM in children aspects.

## Going forward



The Working Group is currently preparing to launch www pages. Have a look on preview and sitemap proposal.



## Activities

In the period of 2008-2011 WG realized many activities in all over the World (all documented in ICA News) but it is a fact that network of periodical WG events in different parts of the World have been established:

- Cartography and GIS conferences in Bulgaria (Borovets . Nessebar and in the future Albena) with EU seminars on EW and CM with participation of the cartographers from all World), with period of 2 years,
- GeoSiberia annual conferences with regular seminars devoted to EW and CM in Novosibirsk, Russia,
- AutoCarto conferences in USA (Shepherdstown, Orlando,...), with 2 years periods where our workshops are included,
- Special EW and CM events in Czech republic (Brno, Prague, Karlovy Vary, ...)
- Special conferences and seminars in China (Wuhan, Beijing, Fuzhou) and other countries of Asia (Indonesia, Malaysia, India).

The very special events have been:

- in January 2009 a Joint Symposium of ICA WG with the JBGIS Gi4DM - Cartography and Geoinformatics for Early Warning and Emergency Management - in Prague, Czech Republic, organized as a part of activities in connection of the Czech Presidency of European Commission,
- May 2009 saw the China -EU Early Warning and Emergency Management Seminar: Challenges, Best Practices, Perspectives, The WG was represented by WG Chairman Konečný who was asked by EU delegation in Beijing and Czech Embassy to select the best cartographical and geoinformational speakers from the European Union (Chinese partner was the National Chinese School for Public Administration).
- June 2009, as a part of the AGILE 2009 conference, a workshop - GI@earlywarning - was organized by Martin Breunig, University of Osnabrück and Wolfgang Reinhardt, University of the Bundeswehr Munich. WG Chair Professor Konečný gave a presentation – “Cartography and Geoinformatics in Early Warning and Emergency Management: how to enhance the role of individuals?”
- in November 2009 two sessions in the ICC program in Santiago, Chile organized by WG were held.

## Publications

Konečný, M. - Reinhardt, W., eds., **International Journal of Digital Earth**, Abindon, Oxon, UK, Taylor and Francis, Great Britain. ISSN 1753-8947, 2010, vol. 4/3, 408 pp.(Part B)

Konečný, M. - Reinhardt, W., eds., **International Journal of Digital Earth**, Abindon, Oxon, UK, Taylor and Francis, Great Britain. ISSN 1753-8947, 2010, vol. 3/3, s 311 pp.(Part A)

Konecny M., Zlatanova S., T. L. Bandrova (eds.): **Geographic Information and Cartography for Risk and Crisis Management**. Lecture Notes in Geoinformatics and Cartography. ISSN 1863-2246, ISBN 978-3-642-03441-1 Springer Heidelberg Dordrecht London New York, 2010. 446 pp.

*Proceedings*

International Workshop on “**Early Warning and Crises/Disaster and Emergency Management**”. 28- 29 April 2011. Novosibirsk, Russian Federation. Proceedings. Prepared by: S. S. Dysljuk, A.G. Novitskaya. Introduction: M. Konecny. VII. International Trade-Fair and Scientific Conference GeoSiberia. 128 p. 2011

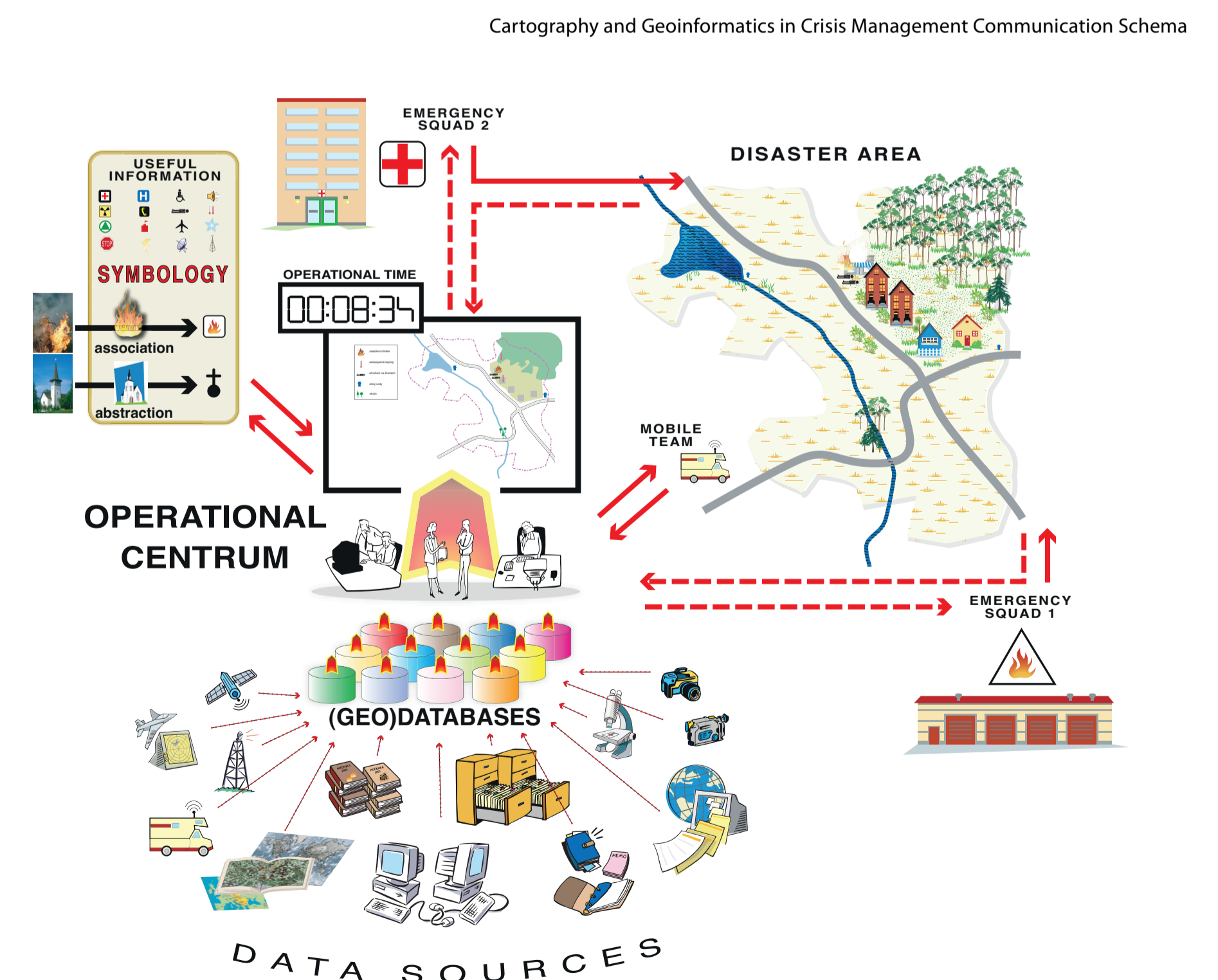
T. Bandrova, M. Konecny (Eds.) **3rd International Conference on Cartography and GIS**, CD Proceedings, Nessebar, Bulgaria, 2010, ISSN:1314-0604

T. Bandrova, M. Konecny (Eds.) **3rd ISDE Digital Earth Summit**, CD Proceedings, Nessebar, Bulgaria, 2010, ISBN: 978-954-724-039-1.

International Workshop on “**Early Warning and Crises/Disaster and Emergency Management**”. 28-29 April 2010. Novosibirsk, Russian Federation. Proceedings. Prepared by: S. S. Dysljuk, E.V. Komisarova, A.G. Novitskaya. VI. International Trade-Fair and Scientific Conference GeoSiberia. 129 p. 2010.

Konecny M., Zlatanova S., Bandrova T., Friedmannova L., Eds., Joint Symposium of ICA Working Group on CEW&CM and JBGIS Gi4DM “**Cartography and Geoinformatics for Early Warning and Emergency Management**”, January 19-22, 2009, CD Proceedings, 696 p. ISBN: 978-80-210-4796-9.

KONEČNÝ, M., ed. **Cartography and GI research Agenda for Early Warning and Crises Management**. In Workshop ICA Working Group on Cartography in Early Warning and Crisis Management. Shepherdstown, USA : ICA, 2008. ISBN 978-1-907075-01-8, 73 p.



Design by Lucie Friedmannová

For more information about this commission, please contact the chair of the commission, Prof. Milan KONEČNÝ, Masaryk University, Brno, Czech Republic. Email: konecny@geogr.muni.cz