



Commission on Geospatial Analysis and Modeling

<https://gam.icaci.org/>

Welcome

The Commission

Join Us

Publications

Activities

Research Agenda

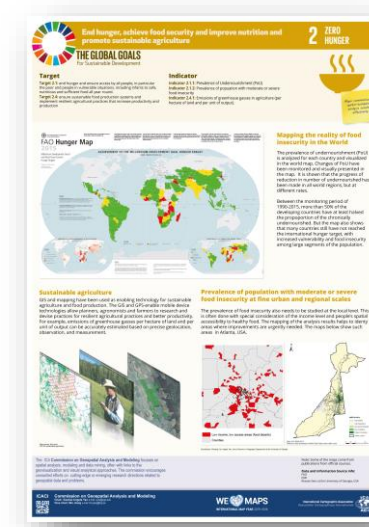
Introduction of the Commission on GAM

The commission on Geospatial Analysis and Modeling (GAM) was established in August 2007, following an official approval of the 14th General Assembly of the ICA. Since then, the commission has grown steadily in the past three terms (2007-2011, 2011-2015, 2015-2019).

In the age of information technology, vast amount of georeferenced data are widely available and relevant in almost all disciplines of social and environmental sciences. However, it is geospatial knowledge, in forms of patterns, structures, relationships, and rules, rather than the spatial data, that would significantly contribute to our understanding of the world and the systems in it. The aim of this commission is to have a research community for everyone who shares research interests in learning geospatial knowledge by analysis and modeling of geospatial data. The specific objectives in recent terms include the following:

- ❖ foster a research community on spatial analysis, modeling, and data mining, with links to geovisualization and visual analytics;
- ❖ develop and maintain connections and joint efforts with other ICA commissions as well as other related GIScience and geographic academic organizations
- ❖ encourage concerted efforts on new research topics related to the analysis and modeling of emerging location-based social media data and other big data;
- ❖ edit and publish research findings

The commission is currently chaired by **Prof. Xiaobai Angela Yao**, University of Georgia, USA, and **Prof. Bin Jiang**, University of Gävle, Sweden. Should you have any questions or suggestions for the commission, please feel free to contact them.

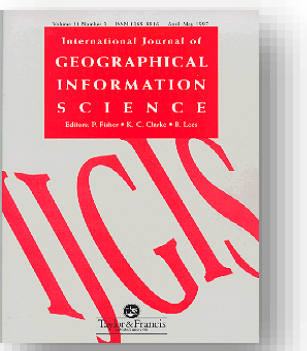


Activities

- Organize / co-organize workshops and conferences
- Edit special issues in high impact academic journals and/or books for members to disseminate research findings
- Develop a research agenda and keep it updated
- Organize events to encourage collaborative research among members

Special Issues in the term 2015-2019

Yao, X. H. Huang, J. Krisp, B. Jiang. 2019. *Representation and Analytical Models for Location-based Social Media Data and Tracking Data*. Special Issue *International Journal of Geographical Information Science*.



Yao, X. and B. Jiang, M. Madden, Y. Liu. 2016. *New Insights Gained from Location-based Social Media Data*. Special Issue *Computers, Environment, and Urban Systems*.



Recent Events

- The International Symposium on *Location-based Big Data 2019*. Jul.15, 2019. Tokyo, Japan.
- One-day workshop on *Big Data Analytics* in conjunction with AGILE 2018, Lund, Sweden
- Tutorial *Why Topology Matters in Spatial Cognition and Analysis* in conjunction with the ISPRS Geospatial Week, Wuhan China. Sept.18-22, 2017
- The International Symposium on *Location-based Social Media Data and Tracking Data*. July 1-2, 2017. Washington DC (Organized)
- The 2nd International Conference on *Location-based Social Media Data*. Aug. 26-28, 2016. Shanghai, China.
- The 1st International Conference on *Location-based Social Media Data*. Athens, GA. USA. Mar. 13-14, 2015.

How can you get involved

It is easy and free to join the commission, simply go to **Join us** page on the commission website <https://gam.icaci.org/join-us/> to fill out a very short form. There are many ways to contribute to, and benefit from, commission activities. For instance, you can

- Participate in a workshop or conference organized by the GAM commission
- Initiate and organize a local academic event, such as a GAM special session at any conference
- Submit research manuscripts to special issues or books edited by the commission
- Come to the commission's business meeting during an ICC conference to get connected and to exchange ideas !
- ...

Welcome to the GAM commission !